



مصنع مصممون الخليج للملابس

GULF UNIFORM DESIGNERS PLANT



MADE IN SAUDI ARABIA



[www.gulfuniform.com.sa](http://www.gulfuniform.com.sa)

# TABLE OF CONTENTS

- ABOUT OUR COMPANY.....3
- QUALITY POLICY.....4
- WORK POLICY.....6
- OUR WORK PROCESS.....8
- OUR CUSTOMERS.....10
- GULF UNIFORM SERVICES**.....12
  - SECURITY & TRAINEE UNIFOMS.....14
  - FIRE RETARDANT.....36
  - WORKSHOP UNIFORMS.....60
  - LENZING FR UNIFORM.....74
  - MEDICAL .....84
  - ACCESSORIES.....94
  - CATERING.....106



# ABOUT OUR COMPANY

Gulf Uniform Designers Plant has revolutionized the uniform industry by offering exceptional customer service, innovative styles, and products that are unmatched in comfort and durability since 1985, We are offering wholesale and retail working uniforms for security, Pre resistance, industrial & maintenance, catering, and hospitals.

Our history of consistent value, quality, and service makes us a dependable source. We have achieved this by providing the broadest range of products, the best quality garments, and on-time delivery.

Whether you are purchasing for a large company, a small agency, or simply shopping for yourself you'll receive the same honest, reliable, and prompt service. Distinctive styles and creativity combined with personalized and professional services make doing business with Gulf Uniform a pleasure from order to delivery. Competitive pricing sets us apart from the competition and further enhances your uniform purchasing experience. By continuously improving our products with our highly motivated and skilled employees, high tech equipment and an innovative spirit, Gulf Uniform aims to exceed our customers' expectations.





## QUALITY POLICY

Gulf Uniform is committed to providing its customers with high-quality services to meet contractual specifications and requirements. It is the objective of Gulf Uniform to ensure that each contract is handled from inquiry to delivery with the highest level of quality, services, and exceptional workmanship.

It is our goal also to maintain a quality awareness strategy in our plant stimulating innovation and initiative in working practice seeking always to improve services quality and competitive edge.

SERVICE



RELIABILITY



INSPECTION



QUALITY



DELIVERY







## WORK POLICY

workwear is more than just clothing, each item should be carefully designed and manufactured with quality fabric to look great on every employee while allowing them to perform their duties in comfort and style.

By taking these things into consideration, GULF UNIFORM DESIGNER PLANT provides a professional team that partners with you to build a uniform that enhances your corporate image and works hand in hand for your company.

There is a wide range of machinery for different processes in apparel manufacturing from design development to fabric checking to garment packing. we use hi-tech machinery that is helping us to produce supreme quality garments.



# OUR WORK PROCESS

## 1.CONSULTATION

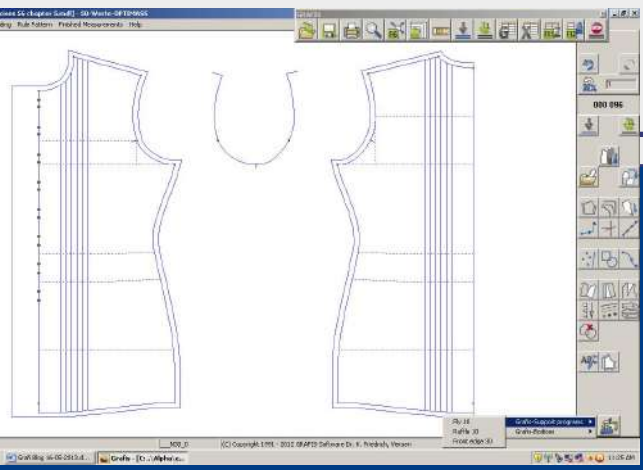
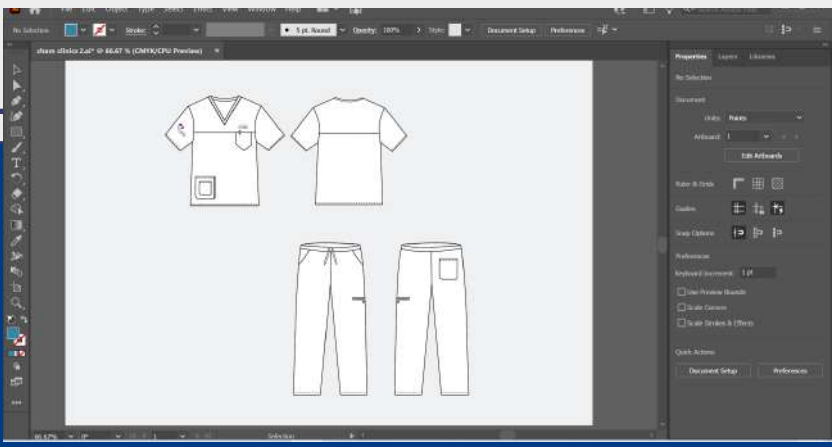
we start with initial Free consultation from our team to understand the uniform needs of your employee.

## 3.PRODUCTION

In this phase we start with fabric inspection, fabric spreading, fabric cutting with cutting machine, garment stitching and garment embroidery if the design needs.

## 5.DELIVERY

we deliver your order to your location. or we have shipment service to your city.

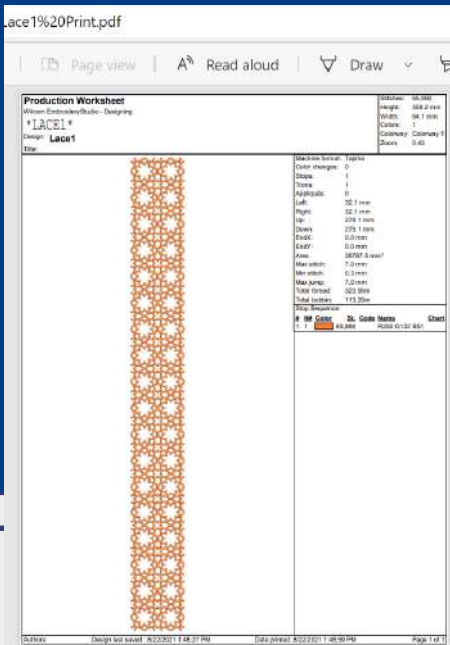


## 2.DESIGN

For Product designing and pattern making, we use CAD (computer-aided design) and we print the pattern in a plotter machine

## 4.CARE

After the garment is finished we have QI unit for garment checking, garment pressing, repair work, garment folding, and packing.





## OUR CUSTOMERS





## SECURITY & TRAINEE

we provide one of the best security attire that is manufactured by using suitable designs and fabrics. we provide trousers, shirts, jackets, and raincoats.



## MEDICAL

We offer Performance scrubs for doctors, nurses, and medical staff that are extremely durable, soft, and maintain a professional appearance, even offer hospital patients' supplies: gowns, bed linen, drapes, towels, and pajamas



## INDUSTRIAL

we are providing the industrial security uniform for personal protection such as gas plant, oil refineries to protect employees from injury with restrictions related to dress Code- Two provide Pre redshirts, trousers, coverall, and accessories that are suitable to the field.

## FIRE RETARDANT

we provide FR shirts, trousers, coveralls with highly comfortable NOMEX fabric For thermal protection in the harshest of environments.



## CATERING

Uniforms make your staff members more identifiable to guests and others which helps to enhance your branding. we provide shirts, trousers, waist coat, chef coat, apron and accessories that are designed in style and function.



## ACCESSORIES

In some fields employees must wear safe and appropriate accessories, we offer several types of accessories such as belts, shoes, safety shoes, ties, bow ties, hats, caps, berets, and suit bags which are designed and manufactured in professionally.



# SECURITY & TRAINEE UNIFORMS

SHIRTS, TROUSERS, JACKETS, RAINCOATS



SECURITY

ARAMCO LONG SLEEVE SHIRT



16

TWO POCKETS WITH FLAPS AND BOX PLEAT  
EPAULETTES IN SHOULDER  
EYELET PATCH IN LHS  
EMBROIDERY IN THE SLEEVE OR WITHOUT

COLOR BEIGE

- FABRIC
- 65% POLYESTER 35% VISCOSE
  - 55% POLYESTER 45% WOOL
  - 70% COTTON 30% POLYESTER

SIZES 14-21

size	Part No
Beige 14	GUSECOP-033
Beige 14.5	GUSECOP-001
Beige 15	GUSECOP-002
Beige 15.5	GUSECOP-003
Beige 16	GUSECOP-004
Beige 16.5	GUSECOP-005
Beige 17	GUSECOP-006
Beige 17.5	GUSECOP-007
Beige 18	GUSECOP-008
Beige 18.5	GUSECOP-009
Beige 19	GUSECOP-010
Beige 19.5	GUSECOP-011
Beige 20	GUSECOP-012
Beige 21	GUSECOP-013

SECURITY

ARAMCO FLAT FRONT TROUSER



17

KNEE LINED TROUSER  
FLY TAB WITH BUTTON HOLE  
BACK SINGLE WELT POCKET  
BACK RISE PIPING  
BIG BELT HOLDER AT WAIST

COLOR BROWN

- FABRIC
- 65% POLYESTER 35% COTTON
  - 65% POLYESTER 35% VISCOSE
  - 55% POLYESTER 45% WOOL
  - 100% COTTON

SIZES 28-52

size	Part No
Brown 28	GUSECOP-014
Brown 30	GUSECOP-015
Brown 32	GUSECOP-016
Brown 34	GUSECOP-017
Brown 36	GUSECOP-018
Brown 38	GUSECOP-019
Brown 40	GUSECOP-020
Brown 42	GUSECOP-021
Brown 44	GUSECOP-022
Brown 46	GUSECOP-023
Brown 48	GUSECOP-024
Brown 50	GUSECOP-025
Brown 52	GUSECOP-026



SECURITY  
LONG SLEEVE SHIRT



TWO POCKETS WITH FLAPS AND BOX PLEAT  
EPAULETTES IN SHOULDER  
EYELET PATCH IN LHS  
PINTUCKS IN FRONT AND BACK

COLOR BEIGE 

FABRIC  
• 65% POLYESTER 35% VISCOSE  
• 55% POLYESTER 45% WOOL  
• 70% COTTON 30% POLYESTER

SIZES 14-22

size	Part No
Beige 14	61-485-001
Beige 14.5	61-485-002
Beige 15	61-485-003
Beige 15.5	61-485-004
Beige 16	61-485-005
Beige 16.5	61-485-006
Beige 17	61-485-007
Beige 17.5	61-485-008
Beige 18	61-485-009
Beige 18.5	61-485-010
Beige 19	61-485-011
Beige 19.5	61-485-012
Beige 20	61-485-013
Beige 20.5	61-485-014
Beige 21	61-485-015
Beige 21.5	61-485-016
Beige 22	61-485-017

SECURITY  
SHORT SLEEVE SHIRT



TWO POCKETS WITH FLAPS AND BOX PLEAT  
EPAULETTES IN SHOULDER  
EYELET PATCH IN LHS  
PINTUCKS IN FRONT AND BACK  
EMBROIDERY AT FRONT OR WITHOUT

COLOR BEIGE 

FABRIC  
• 65% POLYESTER 35% VISCOSE  
• 55% POLYESTER 45% WOOL  
• 70% COTTON 30% POLYESTER

SIZES 14-22

size	Part No
Beige 14	61-486-001
Beige 14.5	61-486-002
Beige 15	61-486-003
Beige 15.5	61-486-004
Beige 16	61-486-005
Beige 16.5	61-486-006
Beige 17	61-486-007
Beige 17.5	61-486-008
Beige 18	61-486-009
Beige 18.5	61-486-010
Beige 19	61-486-011
Beige 19.5	61-486-012
Beige 20	61-486-013
Beige 20.5	61-486-014
Beige 21	61-486-015
Beige 21.5	61-486-016
Beige 22	61-486-017



SECURITY  
SHIRT POLO SHORT SLEEVE



20

POLO SHIRT WITH NAISOD EMBROIDERY ON LEFT SLEEVE  
SECURITY EMBROIDERY IN ENGLISH ON THE BACK  
LOGO ON THE RIGHT SLEEVE, VERTICAL BADGE  
HOLDER ON THE LEFT CHEST, AND HORIZONTAL TAG  
NAME HOLDER ON THE RIGHT CHEST.

COLOR BEIGE



FABRIC  
• 65% POLYESTER 35% VISCOSE

SIZES S-3XL



size	Part No
Beige S	GUSECO-0054
Beige M	GUSECO-0055
Beige L	GUSECO-0056
Beige XL	GUSECO-0074
Beige 2XL	GUSECO-0057
Beige 3XL	GUSECO-0058

SECURITY  
CARGO TROUSER



21

CARGO TROUSER WITH SIX POCKETS, TWO ON BOTH SIDE  
(BOX PLATED) WITH FLAP VELCRO FASTENING BACK POCK-  
ET BAGGY STYLE WITH FLAP SMALL RADIO LOOP ON BOTH  
SIDE ADJUTANT TO CROSS POCKET -7 LOOPS.

COLOR BROWN



FABRIC  
• 65% POLYESTER 35% COTTON

SIZES 30-54

size	Part No
Brown 30	GUSECO-0059
Brown 32	GUSECO-0060
Brown 34	GUSECO-0061
Brown 36	GUSECO-0062
Brown 38	GUSECO-0063
Brown 40	GUSECO-0064
Brown 42	GUSECO-0065
Brown 44	GUSECO-0066
Brown 46	GUSECO-0067
Brown 48	GUSECO-0068
Brown 50	GUSECO-0069
Brown 54	GUSECO-0070
Brown 54	GUSECO-0071





SECURITY  
LEATHER JACKET



SHIRT FUR COLLAR  
TWO SIDES POCKETS  
ZIPPER POCKET IN LEFT SLEEVE  
STRETCH SLEEVE AND CUFFS

COLOR BROWN 

FABRIC  
•LEATHER

SIZES S-3XL

size	Part No
Brown S	GUSECO-0048
Brown M	GUSECO-0049
Brown L	GUSECO-0050
Brown XL	GUSECO-0051
Brown 2XL	GUSECO-0052
Brown 3XL	GUSECO-0053

SECURITY  
BASEBALL CAP



P-CAP  
ADJUSTABLE VELCRO-FITTING HEAD COVER  
FRONT VISOR  
WITH OR WITHOUT LOGO

COLOR BROWN 

FABRIC  
• 100% COTTON  
• 30% ACRYLIC 70% POLYESTER  
• 100% ACRYLIC  
• 100% POLYESTER

SIZES RGEULAR

size	Part No
Brown	GUSECO-0072
Brown	GUSECO-0073



SECURITY  
LONG SLEEVE SHIRT RSCC



24

COLLAR BUTTON DOWN  
ONE FRONT POCKET  
COLLAR WITH NECK BAND

COLOR WHITE

- FABRIC
- 65% POLYESTER 35% VISCOSE
  - 55% POLYESTER 45% WOOL
  - 70% COTTON 30% POLYESTER

SIZES 14-21

size	Part No
Beige 14	GUISS014
Beige 14.5	GUISS014.5
Beige 15	GUISS015
Beige 15.5	GUISS015.5
Beige 16	GUISS016
Beige 16.5	GUISS016.5
Beige 17	GUISS017
Beige 17.5	GUISS017.5
Beige 18	GUISS018
Beige 18.5	GUISS018.5
Beige 19	GUISS019
Beige 19.5	GUISS019.5
Beige 20	GUISS020
Beige 21	GUISS021

SECURITY  
TROUSER RSCC



25

WAIST BAND WITH BELT HOLDER  
TWO BACK POCKETS

COLOR BLACK

- FABRIC
- OXFORD FABRIC
  - 65% POLYESTER 35% COTTON

SIZES 28-52

size	Part No
Black 28	GUISP028
Black 30	GUISP030
Black 32	GUISP032
Black 34	GUISP034
Black 36	GUISP036
Black 38	GUISP038
Black 40	GUISP040
Black 42	GUISP042
Black 44	GUISP044
Black 46	GUISP046
Black 48	GUISP048
Black 50	GUISP050
Black 52	GUISP052



SECURITY  
ARAMCO FLEECE JACKET



26

COLLAR WITH DETACHABLE HOOD  
SLANT PATCH POCKETS  
SHIRT COLLAR  
BROWN POLY WADDING LINING  
FLEECE INSIDE WITH ZIPPER

COLOR BROWN 

FABRIC

- 65% POLYESTER 35% COTTON
- 65% POLYESTER 35% VISCOSE
- 55% POLYESTER 45% WOOL
- 100% COTTON

SIZES XS-5XL

size	Part No
Brown S	GUSECOP-027
Brown M	GUSECOP-028
Brown L	GUSECOP-029
Brown XL	GUSECOP-030
Brown 2XL	GUSECOP-031
Brown 3XL	GUSECOP-032

WIND CHEATER  
RAIN COAT



27

SLANT PATCH POCKETS  
SHIRT COLLAR  
WINDCHEATER  
COLLAR WITH DETATCHABLE HOOD

COLOR BROWN   
GREY 

FABRIC

- 100% POLYESTER

SIZES XS-5XL





SECURITY  
POLICE HAT



ROUNDED CROWN  
SEMICIRCLE VISOR  
BAND ATTACHED WITH TWO GOLD BUTTONS

COLOR DARK BROWN 

FABRIC

- 65% POLYESTER 35% COTTON
- 65% POLYESTER 35% VISCOSE
- 55% POLYESTER 45% WOOL
- 100% POLYESTER
- 100% COTTON

SIZES 6-3/8 to 7-1/2

size	Part No
Brown 6-3/8	1000217414
Brown 6-1/2	1000217402
Brown 6-3/4	1000217418
Brown 6-7/8	1000217442
Brown 7	1000217407
Brown 7-1/8	1000217446
Brown 7-1/4	1000217460
Brown 7-3/8	1000217466
Brown 7-1/2	1000217469

SECURITY  
FEMALE LONG VEST



TWO POCKETSIN FRONT  
EPAULETTES IN SHOULDER  
EYELET PATCH IN LHS

COLOR BROWN 

FABRIC

- 65% POLYESTER 35% COTTON
- 65% POLYESTER 35% VISCOSE
- 55% POLYESTER 45% WOOL
- 100% COTTON

SIZES 2-26

SECURITY  
FEMALE LONG SLEEVE SHIRT



LONG SLEEVES SHIRT  
TOW CUTS IN FRONT AND BACK  
EMBROIDERY IN THE SLEEVE OR WITHOUT

COLOR BEIGE 

- FABRIC
- 65% POLYESTER 35% VISCOSE
  - 55% POLYESTER 45% WOOL
  - 70% COTTON 30% POLYESTER

SIZES 2-26

30

SECURITY  
FEMALE FLAT FRONT TROUSER



KNEE LINED TROUSER  
FLY TAB WITH BUTTON HOLE  
BACK SINGLE WELT POCKET  
BACK RISE PIPING  
BIG BELT HOLDER AT WAIST

COLOR BROWN 

- FABRIC
- 65% POLYESTER 35% COTTON
  - 65% POLYESTER 35% VISCOSE
  - 55% POLYESTER 45% WOOL
  - 100% COTTON

SIZES 2-26

31



TRAINEE  
SHORT SLEEVE SHIRT



32

SHIRT UNIFORM, FILAFIL WEAVE FINISH  
SHORT SLEEVES  
SINGLE POCKET IN FRONT  
EMBROIDERY AT FRONT OR WITHOUT

COLOR BLUE 

FABRIC

- 65% POLYESTER 35% VISCOSE
- 55% POLYESTER 45% WOOL
- 70% COTTON 30% POLYESTER

SIZES S-3XL

size	Part No
Blue S	GUITC007
Blue M	GUITC008
Blue L	GUITC009
Blue XL	GUITC010
Blue 2XL	GUITC011
Blue 3XL	GUITC012

TRAINEE  
LONG SLEEVE SHIRT



33

SHIRT UNIFORM, FILAFIL WEAVE FINISH  
LONG SLEEVES  
SINGLE POCKET IN FRONT  
EMBROIDERY AT FRONT OR WITHOUT

COLOR

FABRIC

- 65% POLYESTER 35% VISCOSE
- 55% POLYESTER 45% WOOL
- 70% COTTON 30% POLYESTER

SIZES S-3XL

size	Part No
Blue S	GUITC001
Blue M	GUITC002
Blue L	GUITC003
Blue XL	GUITC004
Blue 2XL	GUITC005
Blue 3XL	GUITC006





TRAINEE  
FLAT FRONT TROUSER



34

WAIST BAND WITH BELT HOLDER  
FORMAL SIDE POCKETS  
TWO BACK POCKETS

COLOR  
FABRIC

- 65% POLYESTER 35% COTTON
- 65% POLYESTER 35% VISCOSE
- 55% POLYESTER 45% WOOL
- 100% COTTON

SIZES S-3XL

size	Part No
Navy S	GUITC013
Navy M	GUITC014
Navy L	GUITC015
Navy XL	GUITC016
Navy 2XL	GUITC017
Navy 3XL	GUITC018

TRAINEE  
WINTER JACKET



35

COLLAR WITH DETACHABLE HOOD  
SIDE POCKETS  
FRONT POCKETS WITH FLAPS  
VELCRO HOLDER AT COLLAR END  
SNAP BUTTONS, ZIPPER IN FRONT PLACKET

COLOR

FABRIC

- 65% POLYESTER 35% COTTON
- 65% POLYESTER 35% VISCOSE
- 55% POLYESTER 45% WOOL
- 100% COTTON

SIZES S-3XL

size	Part No
Navy S	GUITC025
Navy M	GUITC026
Navy L	GUITC027
Navy XL	GUITC028
Navy 2XL	GUITC029
Navy 3XL	GUITC030



## FIRE RETARDANT

SHIRTS, TROUSERS, COVERALLS

FLAME RESISTANT  
LONG SLEEVE SHIRT



38

LONG SLEEVE SHIRT  
4.5 OZ NOMEX COMFORT  
TWO POCKETS IN FRONT WITH FLAP AND BUTTONS  
PLEAT AT BACK  
PEN POCKET IN LEFT POCKET  
NFPA APPROVED, TESTED BY AITEX

COLOR GREY  MEDIUM BLUE  
SKY BLUE  
BEIGE  
RED

KHAKI  
NAVY BLUE  
ROYAL BLUE

FABRIC

- 93% NOMEX - 4.5 OZ
- 5% KEVLAR
- 2% ANTI-STATIC
- NOMEX COMFORT

SIZES S-5XL	size	Part No Grey	Part No Beige	Part No Medium Blue
	size	Part No Grey	Part No Beige	Part No Medium Blue
	S	1000905037	1000904896	1000905022
	M	1000905038	1000905009	1000905023
	L	1000905039	1000905016	1000905024
	XL	1000905040	1000905017	1000905025
	2XL	1000905041	1000905018	1000905026
	3XL	1000905042	1000905019	1000905027
	4XL	1000905043	1000905020	1000905028
	5XL	1000905044	1000905021	1000905029

FLAME RESISTANT  
LONG SLEEVE SHIRT WITH PINTUCKS



39

LONG SLEEVE SHIRT WITH PINTUCKSIN FRONT AND BACK  
4.5 OZ NOMEX COMFORT  
TWO POCKETS IN FRONT WITH FLAP AND BUTTONS  
PLEAT AT BACK  
PEN POCKET IN LEFT POCKET  
NFPA APPROVED, TESTED BY AITEX

COLOR NAVY 

FABRIC

- 93% NOMEX - 4.5 OZ
- 5% KEVLAR
- 2% ANTI-STATIC
- NOMEX COMFORT

SIZES  
S-4XL

size	Part No
S	1001027535
M	1001027536
L	1001027537
XL	1001027538
2XL	1001027539
3XL	1001027540
4XL	1001027541





FLAME RESISTANT  
SABIC LONG SLEEVE SHIRT



40

LONG SLEEVE SHIRT  
4.5 OZ NOMEX COMFORT  
TWO POCKETS IN FRONT WITH FLAP AND BUTTONS  
PLEAT AT BACK  
PEN POCKET IN LEFT POCKET  
NFPA APPROVED, TESTED BY AITEX

COLOR  
SKY BLUE

FABRIC  
• 93% NOMEX - 4.5 OZ  
• 5% KEVLAR  
• 2% ANTI-STATIC  
• NOMEX COMFORT

SIZES  
S-5XL

FLAME RESISTANT  
SATORP LONG SLEEVE SHIRT



41

LONG SLEEVE SHIRT  
4.5 OZ NOMEX COMFORT  
TWO POCKETS IN FRONT WITH FLAP AND BUTTONS  
PLEAT AT BACK  
PEN POCKET IN LEFT POCKET  
NFPA APPROVED, TESTED BY AITEX

COLOR  
SKY BLUE

FABRIC  
• 93% NOMEX - 4.5 OZ  
• 5% KEVLAR  
• 2% ANTI-STATIC  
• NOMEX COMFORT

SIZES  
S-5XL



FLAME RESISTANT  
SASREF LONG SLEEVE SHIRT



LONG SLEEVE SHIRT  
4.5 OZ NOMEX COMFORT  
TWO POCKETS IN FRONT WITH FLAP AND BUTTONS  
PLEAT AT BACK  
PEN POCKET IN LEFT POCKET  
NFPA APPROVED, TESTED BY AITEX

COLOR  
GREY

FABRIC  
• 93% NOMEX - 4.5 OZ  
• 5% KEVLAR  
• 2% ANTI-STATIC  
• NOMEX COMFORT

SIZES  
S-5XL

FLAME RESISTANT  
MARAFIQ LONG SLEEVE SHIRT



LONG SLEEVE SHIRT  
4.5 OZ NOMEX COMFORT  
TWO POCKETS IN FRONT WITH FLAP AND BUTTONS  
PLEAT AT BACK  
PEN POCKET IN LEFT POCKET  
NFPA APPROVED, TESTED BY AITEX

COLOR  
MEDIUM BLUE

FABRIC  
• 93% NOMEX - 4.5 OZ  
• 5% KEVLAR  
• 2% ANTI-STATIC  
• NOMEX COMFORT

SIZES  
S-5XL



FLAME RESISTANT  
SHIRT NOMEX STRETCHABLE FABRIC



COLLAR BUTTON DOWN  
TWO POCKETS IN FRONT WITH FLAP AND BUTTONS  
COLLAR WITH NECK BAND  
SPECIALLY WOVEN ARAMCO LOGO  
NFPA APPROVED, TESTED BY AITEX

COLOR GREY 

- FABRIC
- PLAIN
  - 93% NOMEX – 5.3 OZ
  - 5% KEVLAR
  - 2% ANTI-STATIC
  - NOMEX COMFORT

SIZES  
XS-4XL

size	Part No
Grey XS	1001123562
Grey S	1001123572
Grey M	1001123573
Grey L	1001123574
Grey XL	1001123575
Grey 2XL	1001123576
Grey 3XL	1001123577
Grey 4XL	1001123578



FLAME RESISTANT  
PANTS NOMEX STRETCHABLE FABRIC



WAIST BAND WITH LOOPS  
FORMAL SIDE POCKETS  
BACK POCKET IN LEFT PANEL  
NFPA APPROVED, TESTED BY AITEX

COLOR NAVY 

- FABRIC
- PLAIN
  - 93% NOMEX - 6 OZ
  - 5% KEVLAR
  - 2% ANTI-STATIC
  - NOMEX COMFORT

SIZES  
30-54

size	Part No
Navy 32	1001123561
Navy 34	1001123563
Navy 36	1001123564
Navy 38	1001123565
Navy 40	1001123566
Navy 42	1001123567
Navy 44	1001123568
Navy 46	1001123569
Navy 48	1001123570
Navy 50	1001123513
Navy 52	1001123557
Navy 54	1001123571





FLAME RESISTANT  
CARGO TROUSER



46

FR FABRIC  
METAL ZIPPER  
TWO CARGO POCKETS  
TWO WELT POCKETS WITH BUTTONS AT BACK  
NFPA APPROVED, TESTED BY AITEX

COLOR NAVY 

FABRIC  
• 93% NOMEX - 6 OZ  
• 5% KEVLAR  
• 2% ANTI-STATIC  
• NOMEX COMFORT FINISH

SIZES  
30-54

FLAME RESISTANT  
NON-PLEATED TROUSER



47

FR FABRIC  
METAL ZIPPER  
TWO WELT POCKETS WITH BUTTONS AT BACK  
NFPA APPROVED, TESTED BY AITEX

COLOR NAVY 

FABRIC  
• 93% NOMEX - 6 OZ  
• 5% KEVLAR  
• 2% ANTI-STATIC  
• NOMEX COMFORT FINISH

SIZES  
BLACK: 26-60  
NAVY: 26-60

size	Part No Black	Part No Navy Blue
28	1000904897	1000905082
30	1000905066	1000905083
32	1000905067	1000905084
34	1000905068	1000905085
36	1000905069	1000905086
38	1000905070	1000905087
40	1000905071	1000905088
42	1000905072	1000905089
44	1000905073	1000905090
46	1000905074	1000905091
48	1000905075	1000905092
50	1000905076	1000905093
52	1000905077	1000905094
54	1000905078	1000905095
56	1000905079	1000905096
58	1000905080	1000905097
60	1000905081	1000905098



FLAME RESISTANT  
LAB COAT



48

FR FABRIC  
METAL ZIPPER  
TWO WELT POCKETS WITH BUTTONS AT BACK  
NFPA APPROVED, TESTED BY AITEX

COLOR NAVY



FABRIC

- 93% NOMEX -4.5 OZ
- 5% KEVLAR
- 2% ANTI-STATIC
- NOMEX COMFORT FINISH

SIZES

S-2XL

size	Part No
Navy S	1001034285
Navy M	1001034286
Navy L	1001034287
Navy XL	1001034288
Navy 2XL	1001034289

49



FLAME RESISTANT  
ARAMCO NORMAL JACKET



WITH COLLAR  
NAVY BLUE POLY WADDING LINING  
3 LAYERS FABRIC WITH ZIPPER  
SIDE POCKETS  
FRONT POCKETS WITH FLAPS  
VELCRO HOLDER AT COLLAR END  
SNAP BUTTONS, ZIPPER IN FRONT PLACKET  
NFPA APPROVED, TESTED BY AITEX

COLOR NAVY BLUE

- FABRIC
- 93% NOMEX - 4.5 OZ
  - 5% KEVLAR
  - 2% ANTI-STATIC
  - NOMEX COMFORT

SIZES S-5XL

size	Part No
Navy Blue S	1000904898
Navy Blue M	1000905008
Navy Blue L	1000905010
Navy Blue XL	1000905011
Navy Blue 2XL	1000905012
Navy Blue 3XL	1000905013
Navy Blue 4XL	1000905014
Navy Blue 5XL	1000905015

FLAME RESISTANT  
ARAMCO WINTER HEAVY DUTY JACKET



SLANT PATCH POCKETS  
WITH COLLAR  
NAVY BLUE POLY WADDING LINING  
COLLAR WITH DETACHABLE— HOOD  
4 LAYERS FABRIC WITH ZIPPER  
NFPA APPROVED, TESTED BY AITEX

COLOR NAVY BLUE

- FABRIC
- 93% NOMEX - 4.5 OZ
  - 5% KEVLAR
  - 2% ANTI-STATIC
  - NOMEX COMFORT FINISH

SIZES S-5XL

size	Part No
Navy Blue S	1001107791
Navy Blue M	1001107792
Navy Blue L	1001107793
Navy Blue XL	1001107794
Navy Blue 2XL	1001107795
Navy Blue 3XL	1001107845
Navy Blue 4XL	1001107846
Navy Blue 5XL	1001107847



# FLAME RESISTANT ARAMCO WINTER JACKET



52

WITH COLLAR  
SIDE POCKETS  
SIDE ZIPPER  
ZIPPER IN FRONT PLACKET  
3 LAYERS FABRIC WITH ZIPPER  
NFPA APPROVED, TESTED BY AITEX

COLOR NAVY BLUE 

FABRIC

- 93% NOMEX - 4.5 OZ
- 5% KEVLAR
- 2% ANTI-STATIC
- NOMEX COMFORT

SIZES S-5XL

size	Part No
Navy Blue S	1000904898
Navy Blue M	1000905008
Navy Blue L	1000905010
Navy Blue XL	1000905011
Navy Blue 2XL	1000905012
Navy Blue 3XL	1000905013
Navy Blue 4XL	1000905014
Navy Blue 5XL	1000905015

# FLAME RESISTANT JACKET NORMAL DESIGN



53

WITH COLLAR  
NAVY BLUE POLY WADDING LINING  
3 LAYERS FABRIC WITH ZIPPER  
OUTER LAYER NOMEX  
NFPA APPROVED, TESTED BY AITEX

COLOR NAVY BLUE 

FABRIC

- 93% NOMEX - 4.5 OZ
- 5% KEVLAR
- 2% ANTI-STATIC
- NOMEX COMFORT

SIZES S-5XL



FLAME RESISTANT  
COVERALLS NORMAL DESIGN



54

4.5 OZ NOMEX COMFORT  
ONE PATCH POCKET WITH FLAP AT FRONT  
ONE PATCH POCKET WITHOUT FLAP AT FRONT  
SHIRT COLLAR  
TWO SET SNAP BUTTON IN FRONT  
ELASTIC AT BACK WAIST  
NFPA APPROVED, TESTED BY AITEX

COLOR NAVY   
KHAKI  
GREY

FABRIC  
• 93% NOMEX - 4.5 OZ  
• 5% KEVLAR  
• 2% ANTI-STATIC  
• NOMEX COMFORT

SIZES  
28-54

size	Part No
28	1000995332
30	1000995334
32	1000995335
34	1000995336
36	1000995337
38	1000995338
40	1000995339
42	1000995470
44	1000995471
46	1000995472
48	1000995473
50	1000995474
52	1000995475
54	1000995476

FLAME RESISTANT  
FIRE COVERALLS WITH REFLECTING



55

4.5 OZ NOMEX COMFORT  
ONE PATCH POCKET WITH FLAP AT FRONT  
ONE PATCH POCKET WITHOUT FLAP AT FRONT  
WITH COLLAR  
TWO SET SNAP BUTTON IN FRONT  
ELASTIC AT BACK WAIST  
NFPA APPROVED, TESTED BY AITEX

COLOR NAVY 

FABRIC  
• 93% NOMEX - 4.5 OZ  
• 5% KEVLAR  
• 2% ANTI-STATIC  
• NOMEX COMFORT

SIZES  
28-54

size	Part No
28	1000995332
30	1000995334
32	1000995335
34	1000995336
36	1000995337
38	1000995338
40	1000995339
42	1000995470
44	1000995471
46	1000995472
48	1000995473
50	1000995474
52	1000995475
54	1000995476



FLAME RESISTANT  
FEMALE MODEST SHIRT



LONG SLEEVE SHIRT  
4.5 OZ NOMEX COMFORT  
PLEAT AT BACK  
PEN POCKET IN LEFT POCKET  
NFPA APPROVED, TESTED BY AITEX




COLOR GREY-MEDIUM BLUE-KHAKI



FABRIC

- 93% NOMEX - 4.5 OZ
- 5% KEVLAR
- 2% ANTI-STATIC
- NOMEX COMFORT

SIZES  
2-26

size	P. No MUDIUM BLUE 	P. No KHAKE 	P. No GREY 
2	1001066814	1001066827	1001066831
4	1001066815	1001066832	1001066854
6	1001066816	1001066833	1001066853
8	1001066817	1001066834	1001066852
10	1001066818	1001066835	1001066851
12	1001066819	1001066836	1001066850
14	1001066820	1001066849	1001066821
16	1001066821	1001066838	1001066848
18	1001066822	1001066839	1001066847
20	1001066823	1001066840	1001066846
22	1001066824	1001066841	1001066845
26	1001066813	1001066826	1001066843

FLAME RESISTANT  
FEMALE NORMAL SHIRT



LONG SLEEVE SHIRT  
4.5 OZ NOMEX COMFORT  
PLEAT AT BACK  
PEN POCKET IN LEFT POCKET  
NFPA APPROVED, TESTED BY AITEX

COLOR MEDIUM BLUE- 

FABRIC

- 93% NOMEX - 4.5 OZ
- 5% KEVLAR
- 2% ANTI-STATIC
- NOMEX COMFORT

SIZES  
2-26

size	P. No MUDIUM BLUE
2	1001053439
4	1001053440
6	1001053441
8	1001053442
10	1001053443
12	1001053444
14	1001053445
16	1001053446
18	1001053447
20	1001053448
22	1001053449
24	1001053450
26	1001053452





FLAME RESISTANT  
FEMALE BLACK TROUSER



FR FABRIC  
METAL ZIPPER  
TWO WELT POCKETS WITH BUTTONS AT BACK  
NFPA APPROVED, TESTED BY AITEX

COLOR NAVY-BLACK

- FABRIC
- 93% NOMEX - 6 OZ
  - 5% KEVLAR
  - 2% ANTI-STATIC
  - NOMEX COMFORT FINISH

SIZES  
2-26

size	P. No Black	P. No Navy
2	1001053361	1001053382
4	1001053362	1001053383
6	1001053365	1001053384
8	1001053366	1001053385
10	1001053367	1001053386
12	1001053368	1001053387
14	1001053388	1001053432
16	1001053389	1001053433
18	1001053390	1001053434
20	1001053391	1001053435
22	1001053392	1001053436
24	1001053393	1001053437
26	1001053360	1001053415

FLAME RESISTANT  
FEMALE HIJAB HOOD-TYPE



4.5 OZ NOMEX COMFORT  
NFPA APPROVED, TESTED BY AITEX

COLOR MEDIUM BLUE   
-KHAKI 

FABRIC  
• 93% NOMEX - 4.5 OZ  
• 5% KEVLAR  
• 2% ANTI-STATIC  
• NOMEX COMFORT

SIZES  
S-L

size	Part No Medium Blue	Part No Khaki
Small	1001066856	1001066859
Medium	1001066860	1001066857
Large	1001066855	1001066858

FLAME RESISTANT  
FEMALE HIJAB WRAPPED



4.5 OZ NOMEX COMFORT  
NFPA APPROVED, TESTED BY AITEX

COLOR MEDIUM BLUE   
-KHAKI 

FABRIC  
• 93% NOMEX - 4.5 OZ  
• 5% KEVLAR  
• 2% ANTI-STATIC  
• NOMEX COMFORT

SIZES  
ONE SIZE

size	Part No Medium Blue	Part No Khaki
One size	1001067089	1001066861

## WORKSHOP UNIFORMS



WORKSHOP  
LONG SLEEVE SHIRT LIGHT



COLLAR BUTTON DOWN  
ONE FRONT POCKET  
COLLAR WITH NECK BAND  
THREE INCHES CUFFS

**COLOR** LIGHT BLUE  
SKY BLUE  
GREY  
WHITE

**FABRIC**  
• INDIAN FABRIC  
• 128 GSM  
• 35% COTTON 65% POLYESTER

**SIZES** 14-22

WORKSHOP  
LONG SLEEVE SHIRT OXFORD



COLLAR BUTTON DOWN  
ONE FRONT POCKET  
COLLAR WITH NECK BAND

**COLOR** SKY BLUE

**FABRIC**  
• OXFORD LOCAL  
• 50% POLYESTER, 50% COTTON  
• 250 GSM

**SIZES** 14-22



WORKSHOP  
LONG SLEEVE SHIRT OXFORD (HOLAND)



COLLAR BUTTON DOWN  
ONE FRONT POCKET  
COLLAR WITH NECK BAND

COLOR WHITE   
GREY 

FABRIC  
• OXFORD (HOLAND)  
• 50% POLYESTER, 50% COTTON

SIZES 14-22

WORKSHOP  
LONG SLEEVE SHIRT OXFORD (HOLAND)



COLLAR BUTTON DOWN  
ONE FRONT POCKET  
COLLAR WITH NECK BAND

COLOR WHITE   
GREY 

FABRIC  
• OXFORD (HOLAND)  
• 50% POLYESTER, 50% COTTON

SIZES 14-22



WORKSHOP

LONG SLEEVE POLO SHIRT



LONG SLEEVE POLO SHIRT  
COLLAR WITH NECK BAND  
HORIZONTAL TAG NAME HOLDER ON THE RIGHT CHES

**COLOR** NAVY BLUE  
SKY BLUE  
GREY

**FABRIC**  
• 95% POLYESTER 5% SPANDEX

**SIZES** XS-3XL

size	Part No
Navy Blue XS	6000001945
Navy Blue S	6000001945
Navy Blue M	6000001945
Navy Blue L	6000001945
Navy Blue XL	6000001945
Navy Blue 2XL	6000001945
Navy Blue 3XL	6000001945

WORKSHOP

SHORT SLEEVE POLO SHIRT



SHORT SLEEVE POLO SHIRT  
COLLAR WITH NECK BAND  
HORIZONTAL TAG NAME HOLDER ON THE RIGHT CHES

**COLOR** NAVY BLUE  
SKY BLUE  
GREY

**FABRIC**  
• 95% POLYESTER 5% SPANDEX

**SIZES** XS-3XL

size	Part No
Navy Blue XS	6000001945
Navy Blue S	6000001945
Navy Blue M	6000001945
Navy Blue L	6000001945
Navy Blue XL	6000001945
Navy Blue 2XL	6000001945
Navy Blue 3XL	6000001945

WORKSHOP  
FLAT FRONT TROUSER



WAIST BAND WITH BELT HOLDER  
TWO SIDE POCKETS  
TWO BACK POCKETS

COLOR BLACK   
NAVY BLUE 

FABRIC  
• 65% POLYESTER 35% COTTON

SIZES 28-52

WORKSHOP  
FLAT FRONT TROUSER (POLYWOOL)



WAIST BAND WITH BELT HOLDER  
TWO SIDE POCKETS  
TWO BACK POCKETS

COLOR GREY 

FABRIC  
• 65% POLYESTER 35% WOOL

SIZES 28-52





WORKSHOP

FORMAL CARGO TROUSER (HOLAND)



CARGO TROUSER WITH SIX POCKETS, TWO FRONT, TWO BACK, TWO CARGO POCKETS WITH FLAP VELCRO FASTENING -7 BELT LOOPS.

COLOR NAVY BLUE

FABRIC  
• 65% POLYESTER 35% COTTON

SIZES 30-54

WORKSHOP

CASUAL CARGO TROUSER (HOLAND)



CARGO TROUSER WITH SIX POCKETS, TWO FRONT, TWO BACK WITH FLAP VELCRO, TWO CARGO POCKETS WITH FLAP VELCRO -7 BELT LOOPS.

COLOR BLACK

FABRIC  
• 65% POLYESTER 35% COTTON

SIZES 30-54

WORKSHOP  
CASUAL CARGO TROUSER



CARGO TROUSER WITH SIX POCKETS, TWO FRONT, TWO BACK, TWO CARGO POCKETS -7 BELT LOOPS.

**COLOR** BLACK  
NAVY BLUE  
DARK GREY

**FABRIC**  
• 100% COTTON

**SIZES** 28-52

size	Part No
28-52	6000001945

WORKSHOP  
BASEBALL CAP



P-CAP  
ADJUSTABLE VELCRO-FITTING HEAD COVER  
FRONT VISOR  
WITH OR WITHOUT LOGO

**COLOR** NAVY BLUE  
BLACK  
DARK GREY

**FABRIC**  
• 100% COTTON  
• 30% ACRYLIC 70% POLYESTER  
• 100% ACRYLIC  
• 100% POLYESTER

**SIZES** RGEULAR

size	Part No
Baseball cap	6000001945



LENZING FR UNIFORM



FLAME RESISTANT  
LONG SLEEVE SHIRT BUTTON CLOSURE LENZING



LONG SLEEVE SHIRT BUTTON CLOSURE LENZING  
TWO POCKETS IN FRONT WITH FLAP AND BUTTONS  
PLEAT AT BACK  
PEN POCKET IN LEFT POCKET

COLOR  
GREY

FABRIC  
• 49% Lenzing FR  
• 49% Aramid  
• 2% Carbon  
• Weight 150 g/m2 or 4.5 oz/yd2

SIZES  
S-5XL

size	Material No
Grey XS	1001153419
Grey S	1001153840
Grey M	1001153841
Grey L	1001153842
Grey XL	1001153843
Grey 2XL	1001153844
Grey 3XL	1001153845
Grey 4XL	1001153846
Grey 5XL	1001153847

FLAME RESISTANT  
LONG SLEEVE SHIRT BUTTON CLOSURE LENZING



LONG SLEEVE SHIRT BUTTON CLOSURE LENZING  
TWO POCKETS IN FRONT WITH FLAP AND BUTTONS  
PLEAT AT BACK  
PEN POCKET IN LEFT POCKET

COLOR  
KHAKI

FABRIC  
• 49% Lenzing FR  
• 49% Aramid  
• 2% Carbon  
• Weight 150 g/m2 or 4.5 oz/yd2

SIZES  
S-5XL

size	Material No
Khaki XS	1001156128
Khaki S	1001156129
Khaki M	1001156130
Khaki L	1001156131
Khaki XL	1001156132
Khaki 2XL	1001156133
Khaki 3XL	1001156134
Khaki 4XL	1001156135
Khaki 5XL	1001156136

FLAME RESISTANT  
LONG SLEEVE SHIRT BUTTON CLOSURE LENZING



80

LONG SLEEVE SHIRT BUTTON CLOSURE LENZING  
TWO POCKETS IN FRONT WITH FLAP AND BUTTONS  
PLEAT AT BACK  
PEN POCKET IN LEFT POCKET

COLOR  
MEDIUM BLUE

FABRIC  
• 49% Lenzing FR  
• 49% Aramid  
• 2% Carbon  
• Weight 150 g/m2 or 4.5 oz/yd2

SIZES  
S-5XL

size	Material No
Medium Blue XS	1001156137
Medium Blue S	1001156138
Medium Blue M	1001156139
Medium Blue L	1001156140
Medium Blue XL	1001156141
Medium Blue 2XL	1001156142
Medium Blue 3XL	1001156143
Medium Blue 4XL	1001156144
Medium Blue 5XL	1001156145

FLAME RESISTANT  
LENZING TROUSER PANTS



81

FR FABRIC  
METAL ZIPPER 31' Lenzing  
TWO WELT POCKETS WITH BUTTONS AT BACK  
NFPA APPROVED, TESTED BY AITEX

COLOR  
NAVY BLUE

FABRIC  
• 49% Lenzing FR  
• 49% Aramid  
• 2% Carbon  
• Weight 200 g/m2 or 6.0 oz/yd2

SIZES  
NAVY: 30-52

size	Material No
Navy Blue 30	1001156146
Navy Blue 32	1001156147
Navy Blue 34	1001156148
Navy Blue 36	1001156149
Navy Blue 38	1001156150
Navy Blue 40	1001156151
Navy Blue 42	1001156152
Navy Blue 44	1001156153
Navy Blue 46	1001156154
Navy Blue 48	1001156155
Navy Blue 50	1001156156
Navy Blue 52	1001156157

FLAME RESISTANT  
COVERALLS ZIPPER LENZING



COVERALLS ZIPPER LENZING  
ONE PATCH POCKET WITH FLAP AT FRONT  
ONE PATCH POCKET WITHOUT FLAP AT FRONT  
SHIRT COLLAR  
TWO SET SNAP BUTTON IN FRONT  
ELASTIC AT BACK WAIST

COLOR  
NAVY

FABRIC

- 49% Lenzing FR
- 49% Aramid
- 2% Carbon
- Weight 150 g/m2 or 4.5 oz/yd2

SIZES  
38-54

size	Material No
Navy 38	1001156158
Navy 40	1001156159
Navy 42	1001156160
Navy 44	1001156161
Navy 46	1001156162
Navy 48	1001156163
Navy 50	1001156164
Navy 52	1001156165
Navy 54	1001156166

FLAME RESISTANT  
COVERALLS ZIPPER LENZING



COVERALLS ZIPPER LENZING  
ONE PATCH POCKET WITH FLAP AT FRONT  
ONE PATCH POCKET WITHOUT FLAP AT FRONT  
SHIRT COLLAR  
TWO SET SNAP BUTTON IN FRONT  
ELASTIC AT BACK WAIST

COLOR  
KHAKI

FABRIC

- 49% Lenzing FR
- 49% Aramid
- 2% Carbon
- Weight 150 g/m2 or 4.5 oz/yd2

SIZES  
38-54

size	Material No
Khaki 38	1001156186
Khaki 40	1001156187
Khaki 42	1001156188
Khaki 44	1001156189
Khaki 46	1001156190
Khaki 48	1001156191
Khaki 50	1001156192
Khaki 52	1001156163
Khaki 54	1001156194





COVERALLS ZIPPER LENZING  
ONE PATCH POCKET WITH FLAP AT FRONT  
ONE PATCH POCKET WITHOUT FLAP AT FRONT  
SHIRT COLLAR  
TWO SET SNAP BUTTON IN FRONT  
ELASTIC AT BACK WAIST

COLOR  
GREY 

FABRIC  
• 49% Lenzing FR  
• 49% Aramid  
• 2% Carbon  
• Weight 150 g/m2 or 4.5 oz/yd2

SIZES  
38-54

size	Material No
Grey 38	1001156195
Grey 40	1001156196
Grey 42	1001156197
Grey 44	1001156198
Grey 46	1001156199
Grey 48	1001156200
Grey 50	1001156201
Grey 52	1001156202
Grey 54	1001156203



MEDICAL

## MEDICAL LAB COAT



88

COLLAR LAB COAT  
WITH THREE BUTTONS  
THREE POCKETS IN FRONT

**COLOR** WHITE

**FABRIC**

• 65% POLYESTER 35% COTTON

**SIZES** S-3XL

## MEDICAL FEMALE LAB COAT



89

FEMAL COLLAR LAB COAT  
WITH THREE BUTTONS  
TWO POCKETS IN FRONT

**COLOR** WHITE

**FABRIC**

• 65% POLYESTER 35% COTTON

**SIZES** S-3XL





## MEDICAL SCRUB SUIT TOP



V-NECK WITH ONE CHEST POCKET  
SHORT SLEEVES

**COLOR** BLUE

**FABRIC**

- 65% POLYESTER 35% COTTON
- WEIGHT 180

**SIZES** S-3XL

90

## MEDICAL SCRUB SUIT BOTTOM



TYING PANTS  
WITH SIDE POCKETS  
ONE POCKET IN THE BACK

**COLOR** BLUE

**FABRIC**

- 65% POLYESTER 35% COTTON
- WEIGHT 180

**SIZES** S-3XL

91



## MEDICAL HOSPITAL GOWN



TYING ROPE AT COLLAR AND AT WAIST  
CLOSED GOWN  
LONG SLEEVES

**COLOR** YELLOW

**FABRIC**  
• 65% POLYESTER 35% COTTON

**SIZES** S-3XL

92

## MEDICAL X-RAY GOWN



SURGICAL CLOSED GOWN  
LONG SLEEVES

**COLOR** GREEN

**FABRIC**  
• 65% POLYESTER 35% COTTON  
• Weight 125

**SIZES** S-3XL

93



## MEDICAL HOSPITAL GOWN



94

TYING ROPE AT COLLAR  
CLOSED GOWN  
SHORT SLEEVES

**COLOR** WHITE WITH NAVY PRINTS

**FABRIC**  
• 65% POLYESTER 35% COTTON

**SIZES** S-3XL

## MEDICAL HOSPITAL GOWN



95

TYING ROPE AT WAIST  
CLOSED GOWN  
LONG SLEEVES

**COLOR** WHITE WITH BLUE STRIPES

**FABRIC**  
• 65% POLYESTER 35% COTTON

**SIZES** S-3XL



## ACCESSORIES



ACCESSORIES  
SAFETY SHOES

ACCESSORIES  
LOFAR SHOES

SAFTY SHOES

COLOR BLACK

FABRIC  
• 100% POLYESTER

SIZES 39-46



LOFAR SHOES

COLOR BLACK

FABRIC  
•PSEUDO LEATHER

SIZES 39-46



ACCESSORIES

MARRON BOW TIE



PRE-TIED BOW TIE  
WITH ADJUSTABLE HOOK FASTENING

**COLOR** MARRON

**FABRIC**  
• 100% POLYESTER  
• 100% SILK

**SIZES** REGULAR

100

ACCESSORIES

LONG TIE



LONG TIE

**COLOR** NAVY BLUE-BLACK

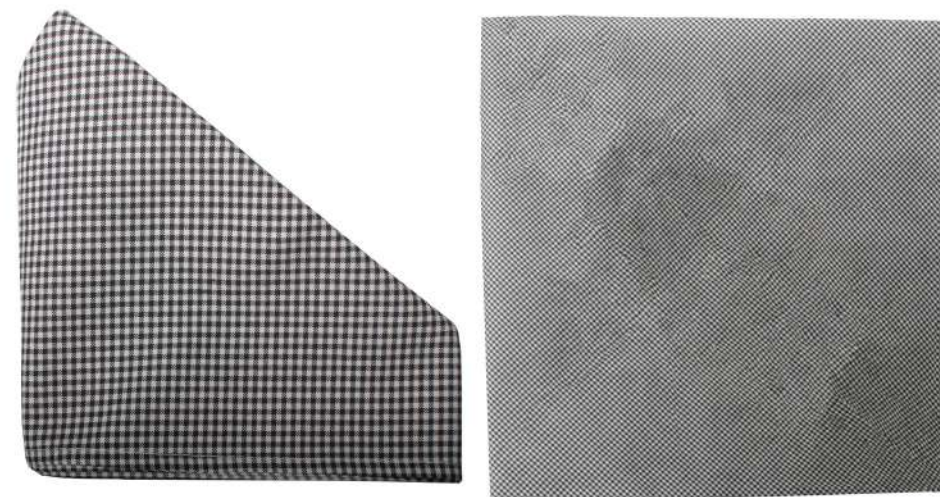
**FABRIC**  
• 100% POLYESTER  
• 100% SILK

**SIZES** REGULAR

101



## ACCESSORIES SCARF



SCARF

**COLOR** BLACK AND WHITE

**FABRIC**

- 65% POLYESTER 35% COTTON
- 65% POLYESTER 35% VISCOSE

**SIZES** S-3XL

## ACCESSORIES CHEF HAT



CHEF HAT

**COLOR** WHITE  
BLACK

**FABRIC**

- 65% POLYESTER 35% COTTON
- 65% POLYESTER 35% VISCOSE

**SIZES** REGULAR



ACCESSORIES  
BELT



BELT

**COLOR** BLACK

**FABRIC**

- PSEUDO LEATHER

**SIZES** 100CM-145CM

ACCESSORIES  
BASEBALL CAP



P-CAP  
ADJUSTABLE VELCRO-FITTING HEAD COVER  
FRONT VISOR  
WITH OR WITHOUT LOGO

**COLOR** NAVY BLUE  
BLACK  
DARK GREY

**FABRIC**

- 100% COTTON
- 30% ACRYLIC 70% POLYESTER
- 100% ACRYLIC
- 100% POLYESTER

**SIZES** RGEULAR

size	Part No
Baseball cap	6000001945



ACCESSORIES  
POLICE HAT



ROUNDED CROWN  
SEMICIRCLE VISOR  
BAND ATTACHED WITH TWO GOLD BUTTONS

**COLOR** DARK BROWN 

**FABRIC**

- 65% POLYESTER 35% COTTON
- 65% POLYESTER 35% VISCOSE
- 55% POLYESTER 45% WOOL
- 100% POLYESTER
- 100% COTTON

**SIZES** 6-3/8 to 7-1/2

size	Part No
Brown 6-3/8	1000217414
Brown 6-1/2	1000217402
Brown 6-3/4	1000217418
Brown 6-7/8	1000217442
Brown 7	1000217407
Brown 7-1/8	1000217446
Brown 7-1/4	1000217460
Brown 7-3/8	1000217466
Brown 7-1/2	1000217469

ACCESSORIES  
BASEBALL CAP



P-CAP  
ADJUSTABLE VELCRO-FITTING HEAD COVER  
FRONT VISOR  
WITH OR WITHOUT LOGO

**COLOR** BROWN 

**FABRIC**

- 100% COTTON
- 30% ACRYLIC 70% POLYESTER
- 100% ACRYLIC
- 100% POLYESTER

**SIZES** RGEULAR

size	Part No
Brown	GUSECO-0072
Brown	GUSECO-0073

CATERING

## CATERING LONG SLEEVE SHIRT



COLLAR BUTTON DOWN  
ONE FRONT POCKET  
COLLAR WITH NECK BAND

**COLOR** WHITE

**FABRIC**

- 65% POLYESTER 35% VISCOSE
- 55% POLYESTER 45% WOOL
- 70% COTTON 30% POLYESTER

**SIZES** 14-21

110

## CATERING PLAID TROUSERS



PLEATED TROUSERS  
SINGLE BACK POCKET WITH BUTTON

**COLOR** PLAID BLACK AND WHITE

**FABRIC**

- 65% POLYESTER 35% COTTON
- 65% POLYESTER 35% VISCOSE

**SIZES** S-3XL

111



## CATERING CHEF COAT



GREY BAND AT THE NECK, CUFFS AND POCKET

**COLOR** WHITE  
GREY

**FABRIC**  
• 65% POLYESTER 35% COTTON  
• 65% POLYESTER 35% VISCOSE

**SIZES** S-3XL

112

## CATERING APRON



ADJUSTER AT BACK  
NECK HOLDER

**COLOR** WHITE  
BLACK

**FABRIC**  
• 65% POLYESTER 35% COTTON  
• 65% POLYESTER 35% VISCOSE

**SIZES** REGULAR

113





## CATERING WAISTCOAT



ADJUSTER AT BACK  
TWO POCKETS AT WAIST  
V-CUT IN FRONT

**COLOR** MAROON

**FABRIC**

- 65% POLYESTER 35% COTTON
- 65% POLYESTER 35% VISCOSE

**SIZES** S-3XL

114

## CATERING CHEF HAT



CHEF HAT

**COLOR** WHITE  
BLACK

**FABRIC**

- 65% POLYESTER 35% COTTON
- 65% POLYESTER 35% VISCOSE

**SIZES** REGULAR

115





Address:  
King Khalid Branch Road, Ibn Sina  
P.O.Box 3638 Al-Khobar 31952  
Kingdom Of Saudi Arabia  
Location on Google Maps: “Gulf Uniform Designer Plant”  
<https://goo.gl/maps/GSkv3enhxgE2>

Phone & Fax:  
P: +966 13 8811724  
P: + 966 13 8811823  
F: +966 13 8811703  
Emails: [sales@gulfuniform.com.sa](mailto:sales@gulfuniform.com.sa)  
Website: [www.gulfuniform.com.sa](http://www.gulfuniform.com.sa)